

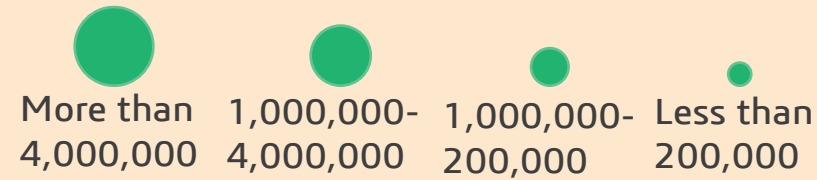
Explore The Path Less Traveled

Glacier National Park

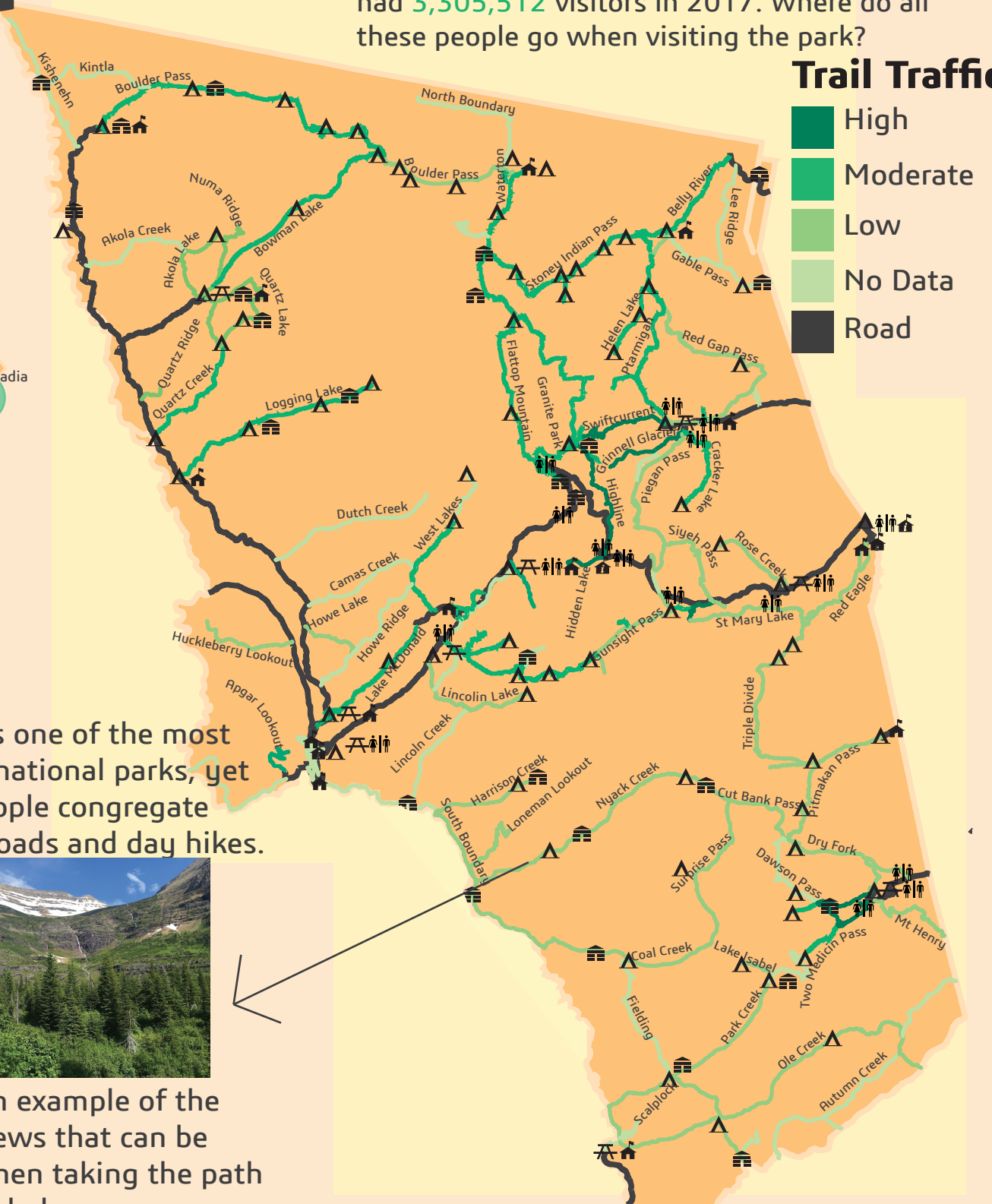
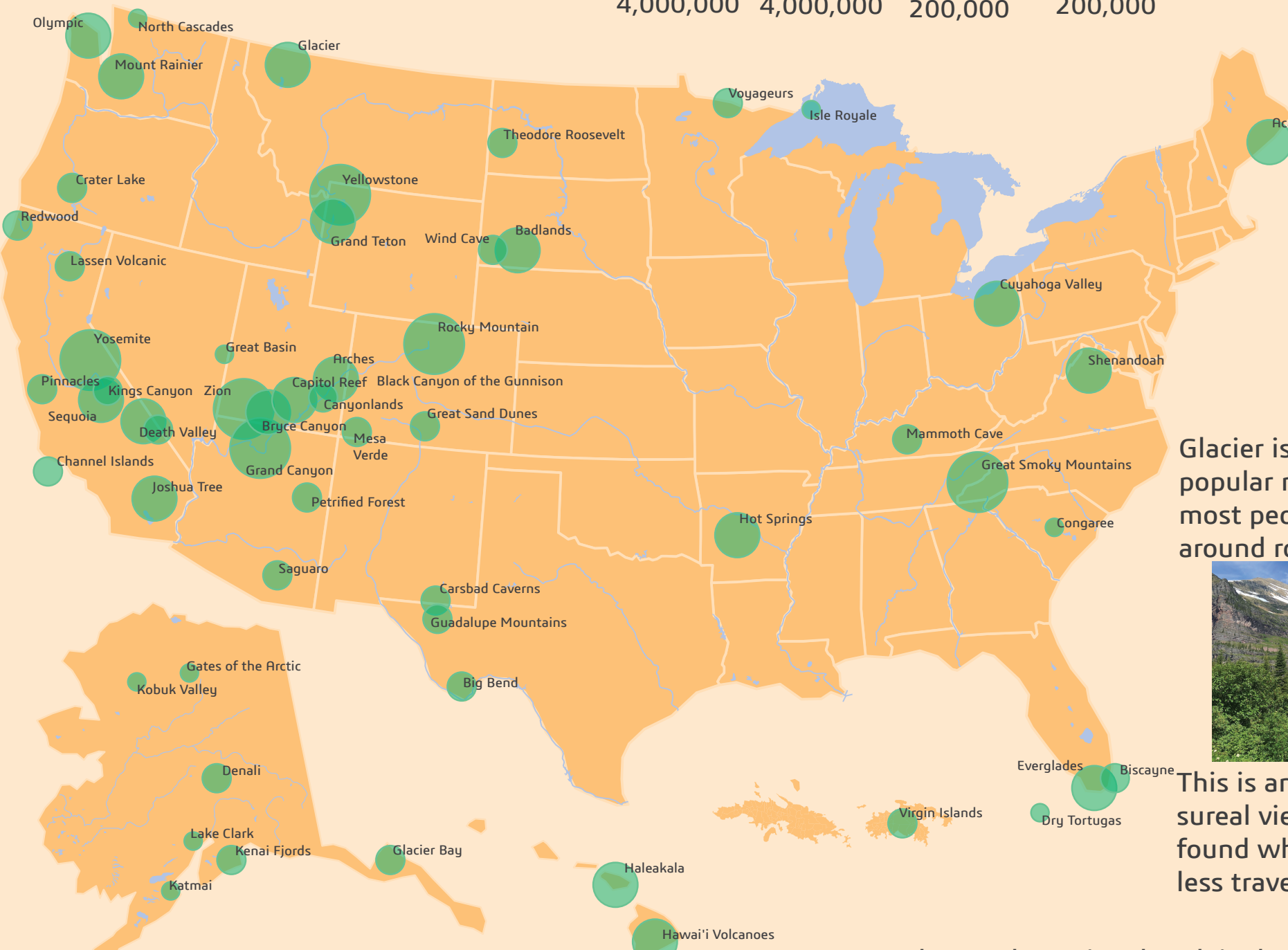
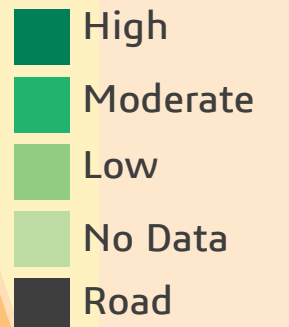
had **3,305,512** visitors in 2017. Where do all these people go when visiting the park?

National Parks have become very popular. Around **331 million** people visited national parks in 2017. But, is it always best to follow the crowds?

Annual Park Visitors (2017)



Trail Traffic

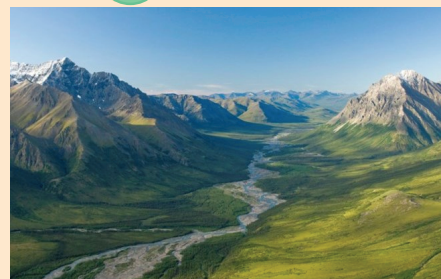


Glacier is one of the most popular national parks, yet most people congregate around roads and day hikes.

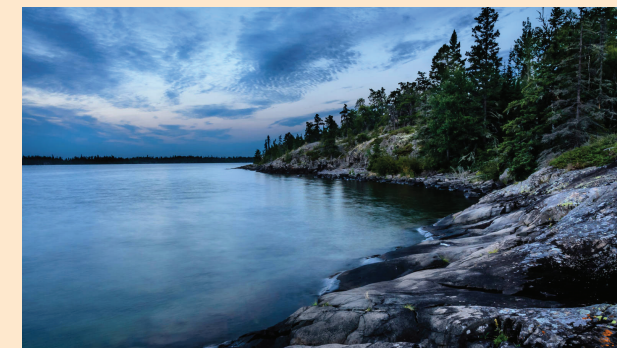


This is an example of the surreal views that can be found when taking the path less traveled

Gates of the Arctic National Park is the least visited park in America at only **11,177** people in 2017. Even still there is scenery unlike anywhere else.



Isle Royale National Park is the least visited park in the lower 48 states, with only **28,196** people in 2017, and is one of the most unique and secluded natural areas in America



Just because a destination is popular doesn't mean it's the best. Consider the wide array of National Park options when planning your next excursion!

Steven Domiter
 USA projection- Contiguous equidistant conic
 Alaska Projection- NAD 1983 Alaska Albers
 Glacier- GCS North American 1983
 Visitor data and trail data from the National Park service
 Trail traffic data and Glacier photo found on AllTrails.com
 Arctic photo found from NPS and Isle Royale photo from NPCA